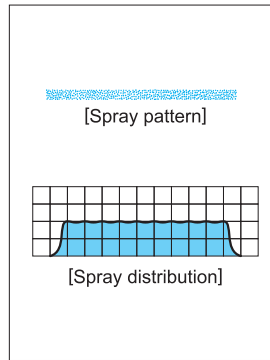
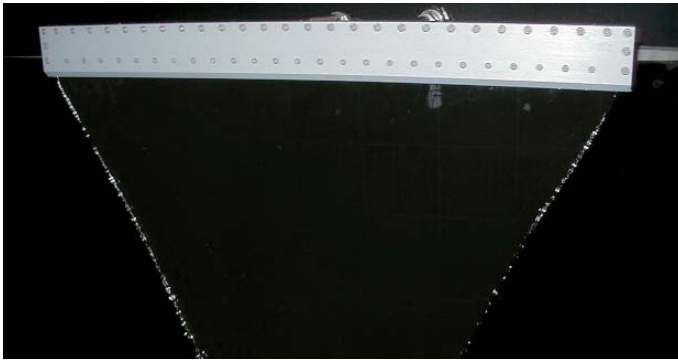


Water (Air) Curtain Slit Laminar Nozzles

Patented

SLNH-H / SLNHA-H



[Features]

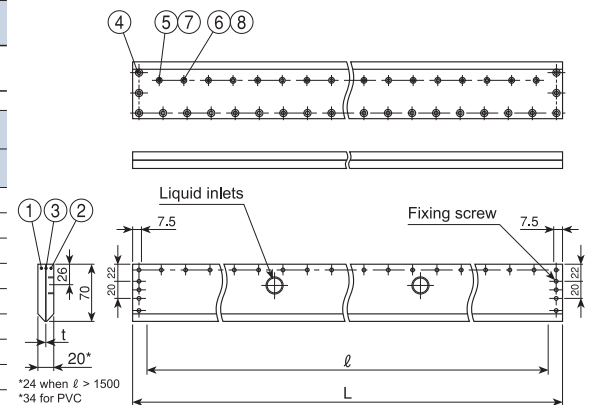
- Uniform spray distribution with soft spray impact for minimal damage to the products.
- Sprays uniformly in width direction. Suitable for etching on large flat panels.
- Thinner liquid film spray saves cost of chemicals and water.
- Compact design.

[Applications]

- Blow-off drying
- Cleaning
- Developing • Etching

SLNH-H / SLNHA-H series

SLNH-H / SLNHA-H series										
Material	• S304 or PVC									
Series	Slit length ℓ (mm)	Slit opening t (mm)	Effective film width (mm) at 10mm height	Number of inlets	Thread size		Total length (mm)		Mass (kg)	
					Liquid inlet	Fixing	L	S304		PVC
SLNH-H (Liquid spraying)	460	0.1	410	2	$\frac{3}{8}F$	S304: M5 (depth 8)	490	4.3	1.3	
	600		550				630	5.5	1.6	
	700		650				730	6.4	1.9	
	780		730				810	7.1	2.1	
	1,200	0.3	1,150	3	$\frac{1}{2}F$		1,230	11	3.1	
	460		410				490	4.3	1.3	
	600		550				630	5.5	1.6	
	700		650				730	6.4	1.9	
SLNHA-H (Air spraying)	780	0.1	730	4	$\frac{1}{2}F$	PVC: M5 (depth 10)	810	7.1	2.1	
	1,200		1,150				1,230	11	3.1	
	530		—				560	5	1.5	
	700		—				730	6.5	1.9	
	810	0.1	—	2			$\frac{1}{2}F$	840	7.5	2.2
	900		—					930	8	2.5
	1,400		—					1,430	12	4



[Note] Appearance and dimensions are subject to change due to product improvement.

Series	Slit Length (mm)	Slit Opening (mm)	Spray Capacity (ℓ /min)							
			0.01 MPa	0.02 MPa	0.03 MPa	0.04 MPa	0.05 MPa	0.06 MPa	0.07 MPa	0.08 MPa
SLNH-H (Liquid spraying)	460	0.1	7.2	10.7	13.4	15.7	17.8	19.7	21.4	23.1
	600		9.4	13.9	17.4	20.5	23.2	25.7	27.9	30.1
	700		11.0	16.2	20.3	23.9	27.0	29.9	32.6	35.1
	780		12.3	18.1	22.7	26.6	30.1	33.3	36.3	39.1
	1200	0.3	18.9	27.8	34.9	40.9	46.4	51.3	55.9	60.2
	460		21.7	32.0	40.1	47.1	53.3	59.0	64.3	69.2
	600		28.3	41.7	52.3	61.4	69.5	77.0	83.8	90.3
	700		33.0	48.7	61.0	71.7	81.1	89.8	97.8	105
SLNHA-H (Air spraying)	780	0.1	36.8	54.2	68.0	79.8	90.4	100	109	117
	1200		56.6	83.4	105	123	139	154	168	181
	530		209	355	472	570	657	736	810	880
	700		276	469	623	753	868	972	1,070	1,160
	810	0.1	319	543	721	871	1,000	1,130	1,240	1,350
	900		355	603	802	968	1,120	1,250	1,380	1,490
	1400		552	938	1,250	1,510	1,740	1,940	2,140	2,330

• The above spray capacity indicates liquid flow rate for SLNH-H series, and air flow rate for SLNHA-H series.
 • Measure for air flow rate is ℓ /min at normal conditions (0°C, 1atm).

• The above spray capacities are for reference only and subject to design changes.

How to order

Please inquire or order for a specific nozzle using this coding system.

① SLNH-H series (Liquid spraying)

(Example) ...2- $\frac{3}{8}F$ SLNH-H460x0.1PVC

2- $\frac{3}{8}F$ SLNH-H 460 x 0.1 PVC

Number of Inlets - Thread Size	Slit Length	Slit Opening	Material
■ 2- $\frac{3}{8}F$	■ 460	■ 0.1	■ S304
■ 2- $\frac{1}{2}F$	■ 600	■ 0.3	■ PVC
■ 3- $\frac{1}{2}F$	■ 700		
■ 4- $\frac{1}{2}F$	■ 780		
■ 5- $\frac{1}{2}F$	■ 1200		

② SLNHA-H series (Air spraying)

(Example) ...2- $\frac{3}{8}F$ SLNHA-H530x0.1PVC

2- $\frac{3}{8}F$ SLNHA-H 530 x 0.1 PVC

Number of Inlets - Thread Size	Slit Length	Material
■ 2- $\frac{3}{8}F$	■ 530	■ S304
■ 2- $\frac{1}{2}F$	■ 700	■ PVC
■ 3- $\frac{1}{2}F$	■ 810	
	■ 900	
	■ 1400	